



@home in Wiler

Chalets at 2000m · Alps · Switzerland

Cantone Vallese

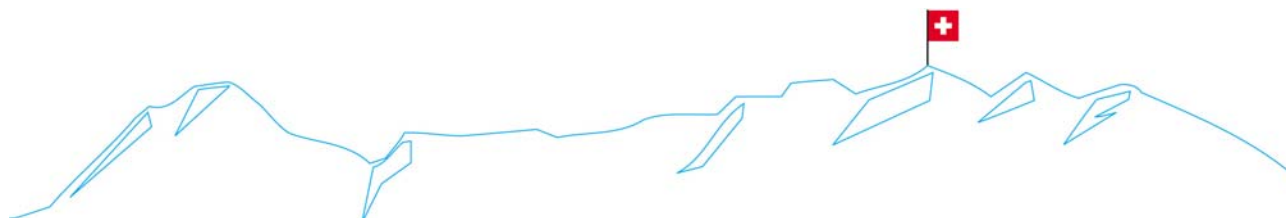
Si costruiscono a Wiler nel canton Vallese uno degli ultimi paradisi alpini della Svizzera a quota duemila s.l.m in località detta Lauchernalp

(circa 20 km da Briga) accessibile tutto l'anno tramite una "gondola" (funivia) in inverno e tramite strada in estate.

Chalet di ottimo pregio e finiture di lusso, in legno di larice. Prezzi full optional di seguito esposti.

Grand chalet di esposizione visitabile in loco a partire da novembre 2003

DESCRITTIVI PARICOLAREGGIATI A DISPOSIZIONE



Arch. Antonio Rodriguez arodriguez@swissonline.ch

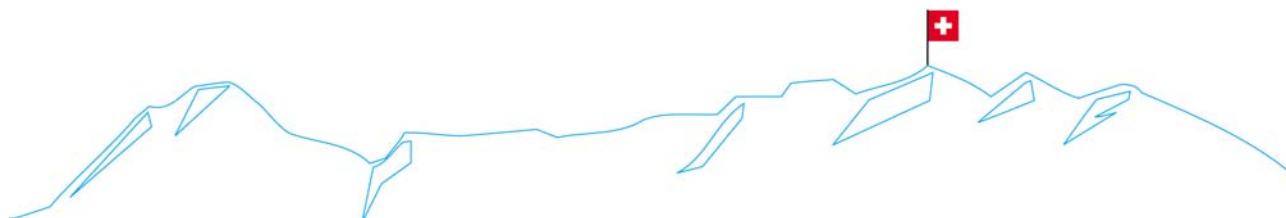
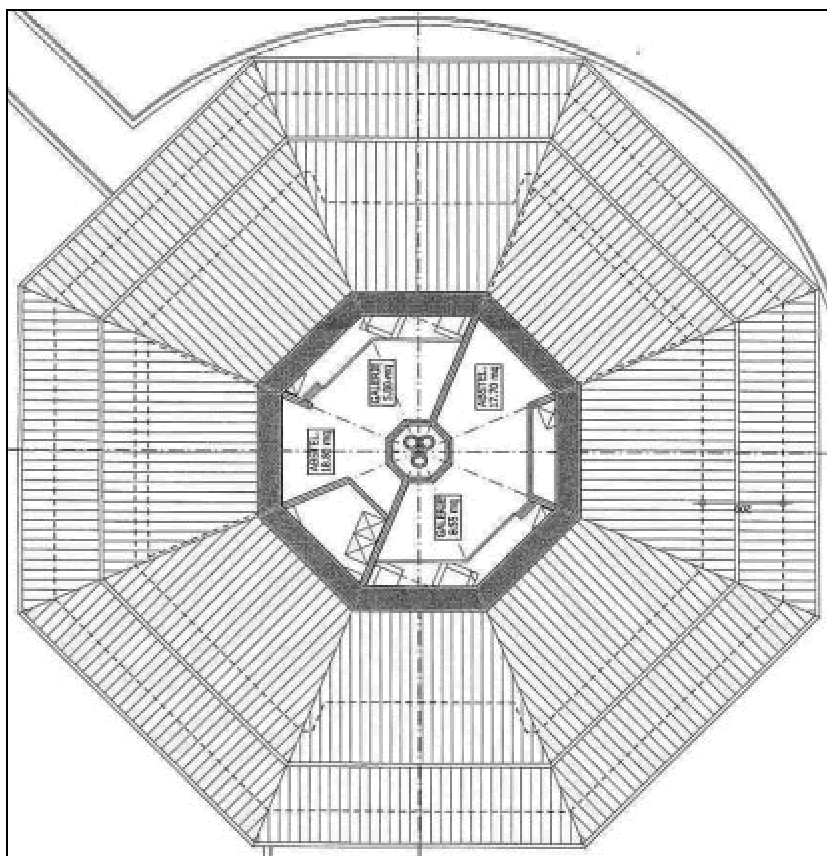
Appartamenti



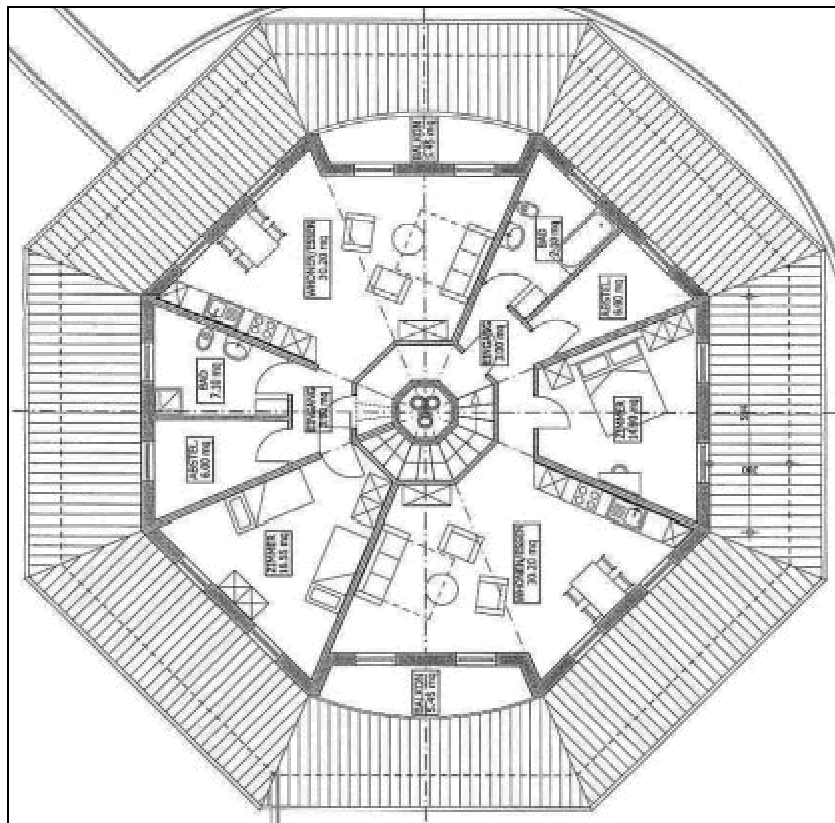
APPARTAMENTI

Prezzi da definire

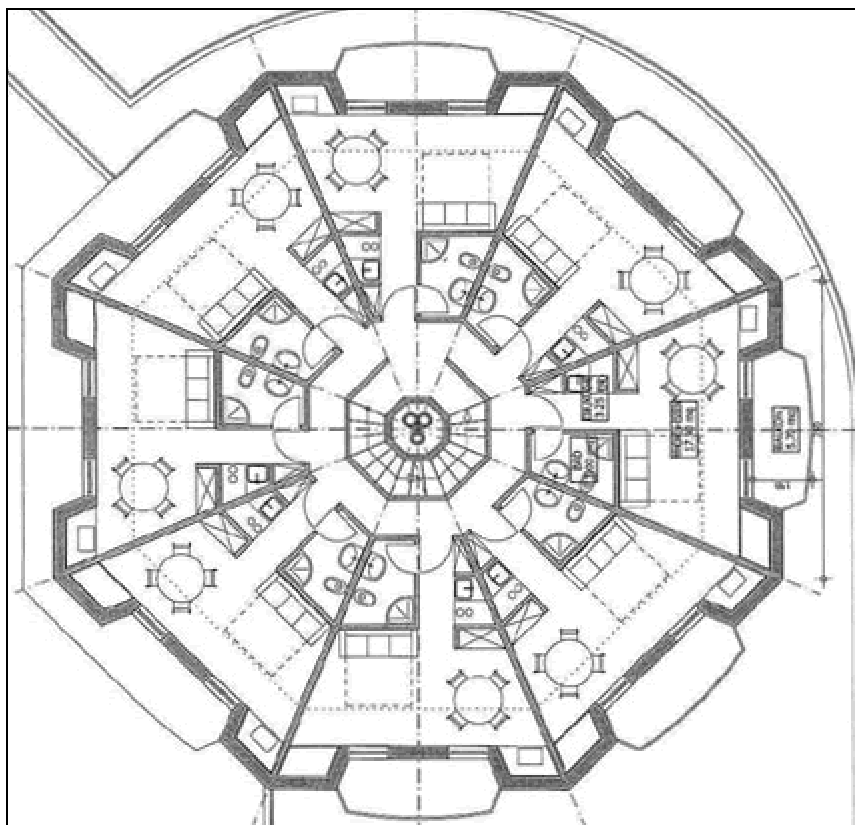
Planimetrie Appartamenti



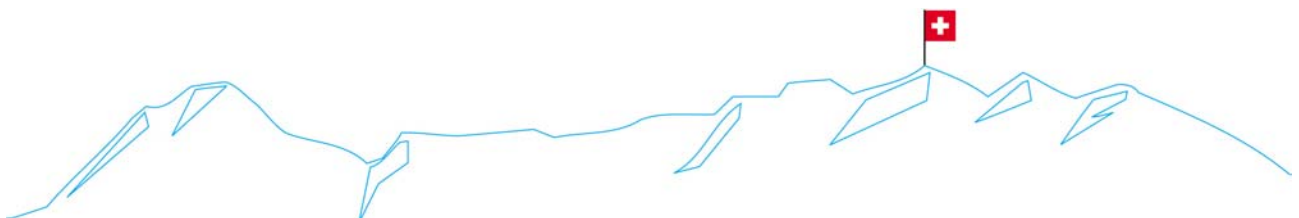
Arch. Antonio Rodriguez arodriguez@swissonline.ch



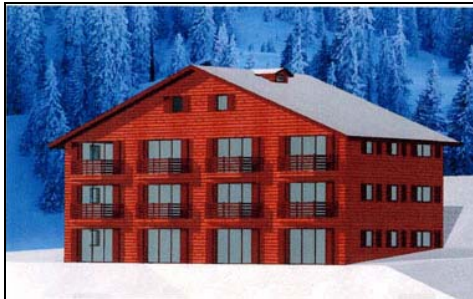
1° Piano



2° Piano



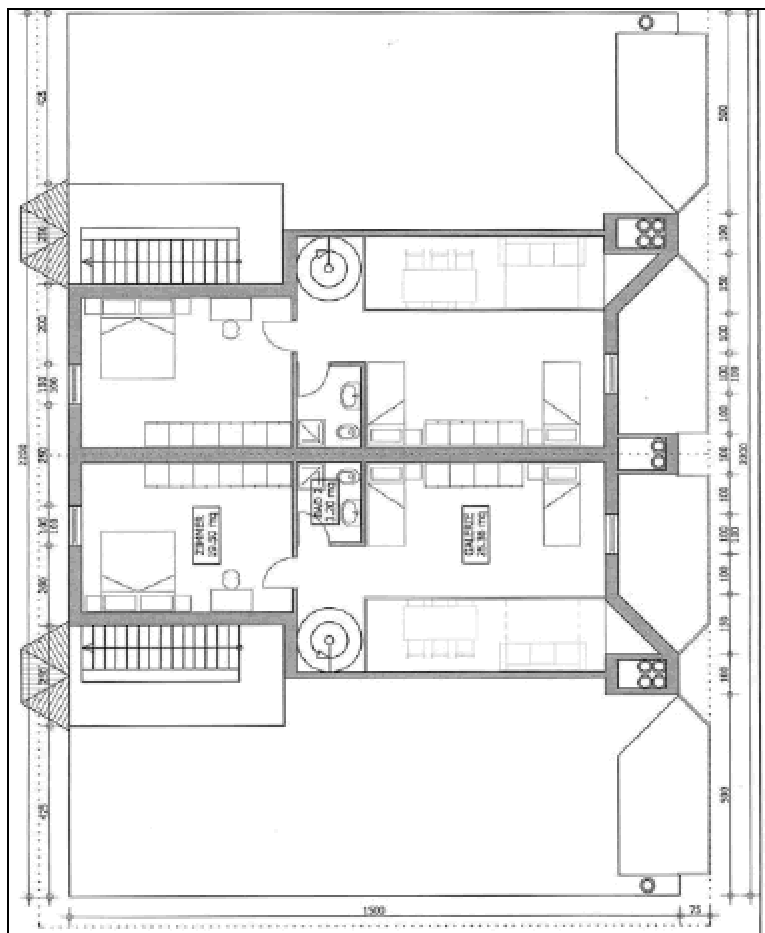
Appartamenti Type B



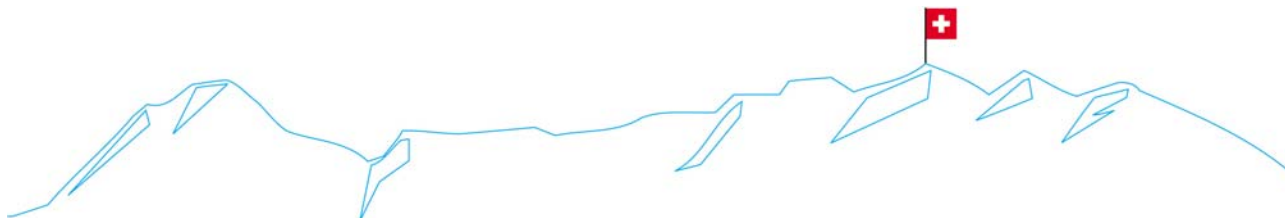
APPARTAMENTI TYPE B

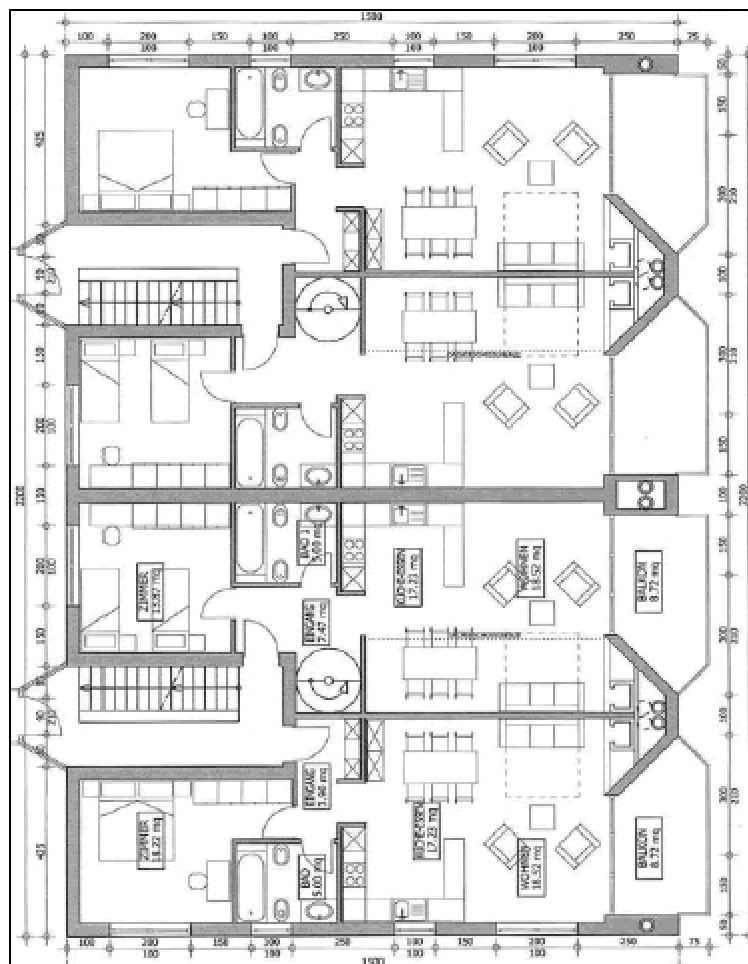
Prezzi da definire

Planimetrie Appartamenti Type B

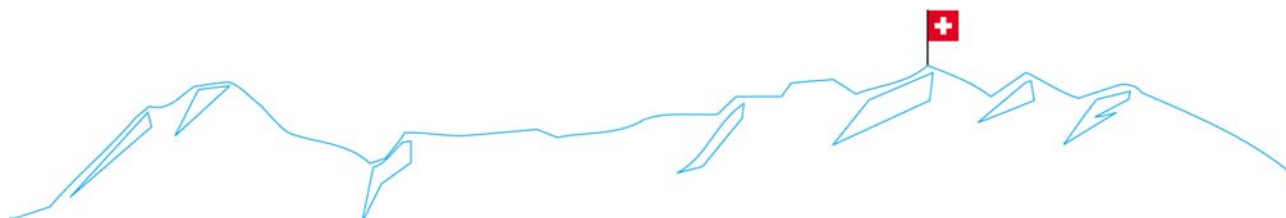


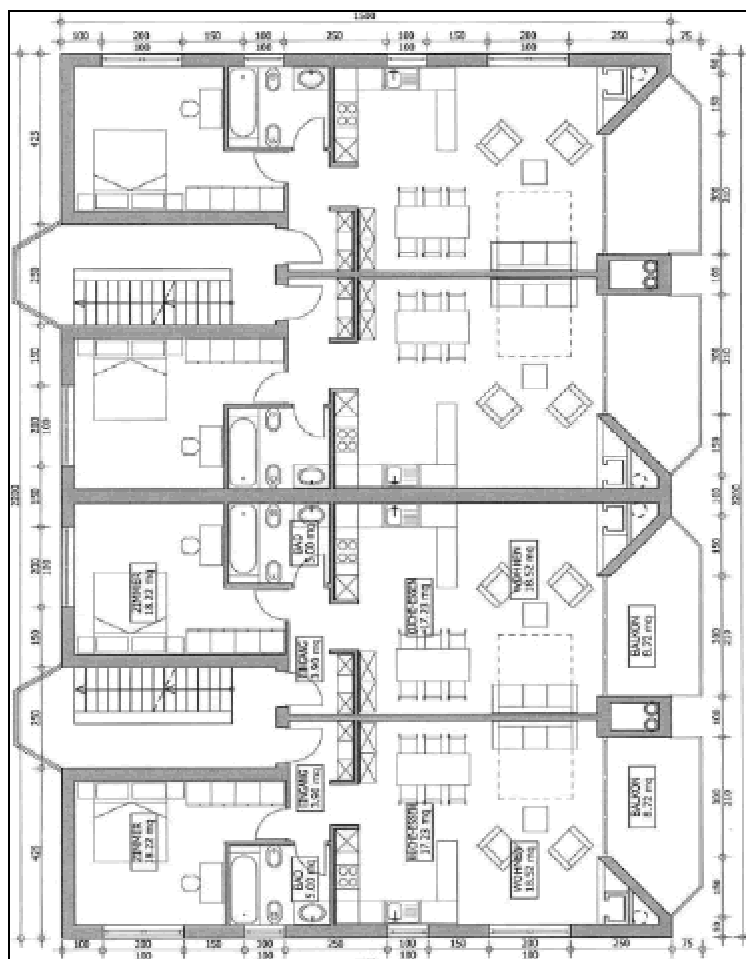
2° Piano



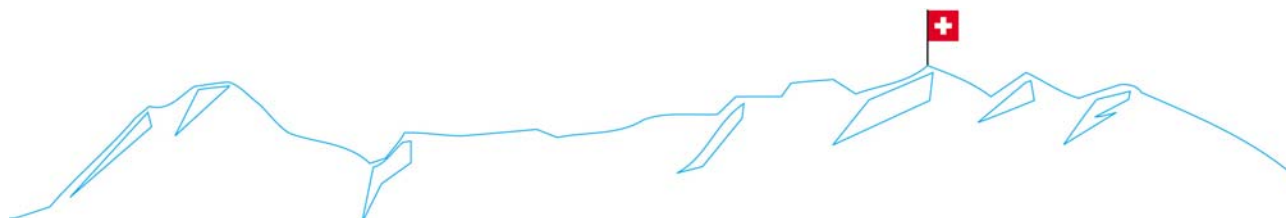


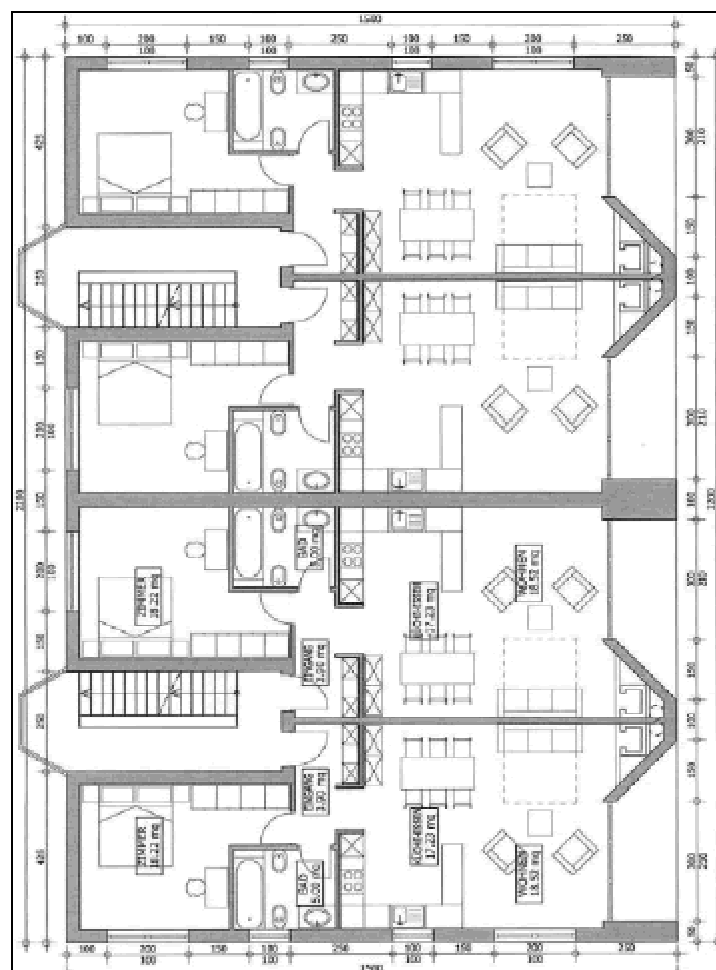
1° e 2° Piano





2° Piano





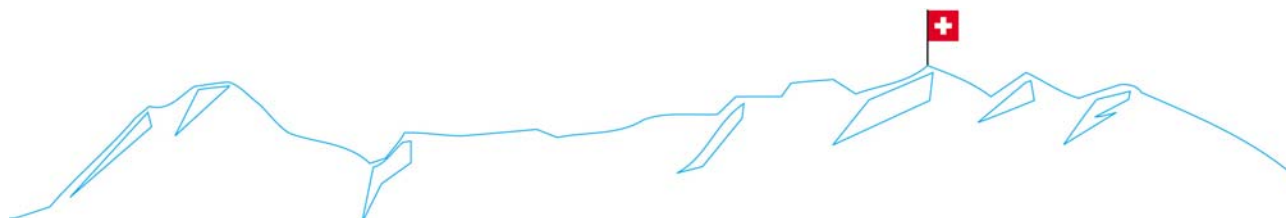
Piano Terra

Appartamenti Type C



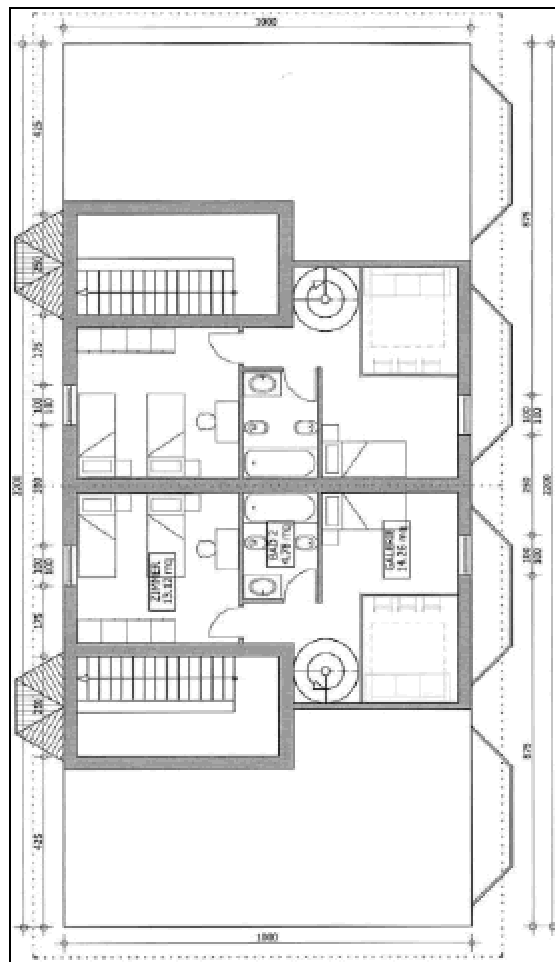
APPARTAMENTI TYPE C

Prezzi da definire

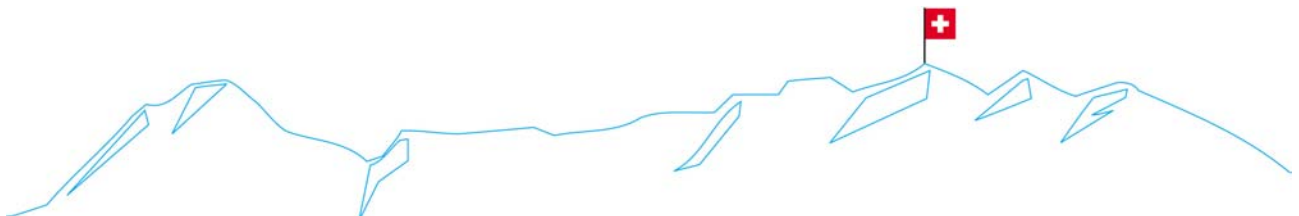


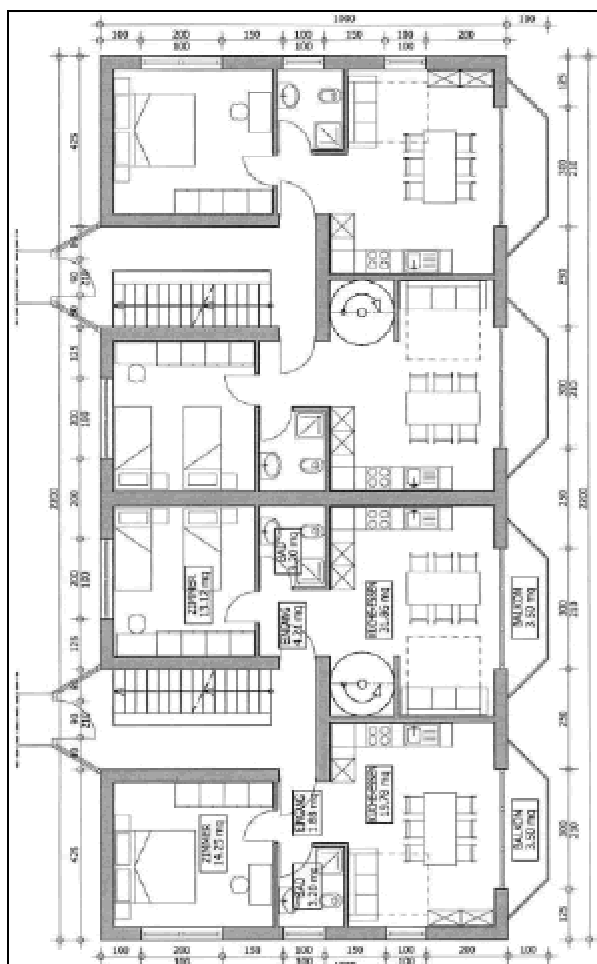
Arch. Antonio Rodriguez arodriguez@swissonline.ch

Planimetrie Appartamenti Type C

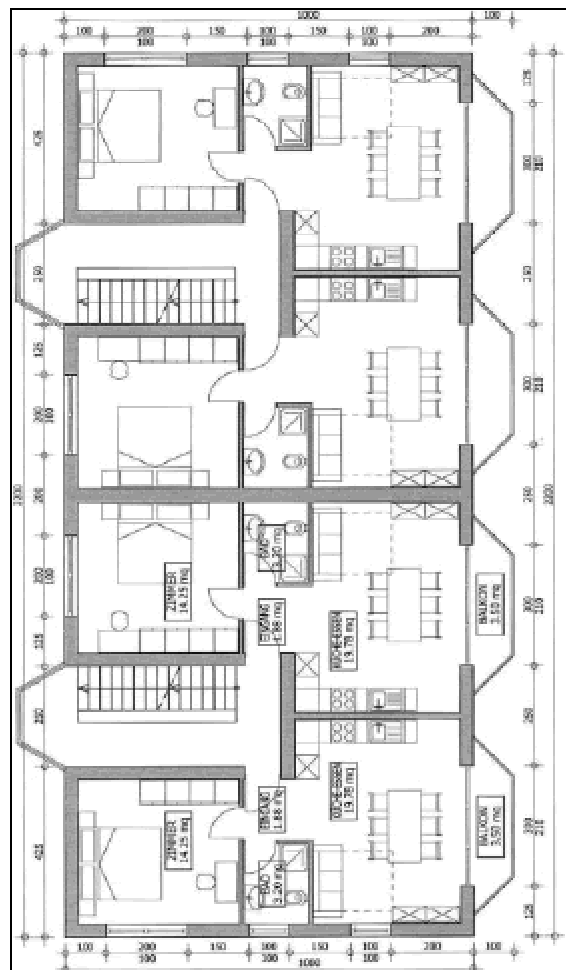


2 Piano

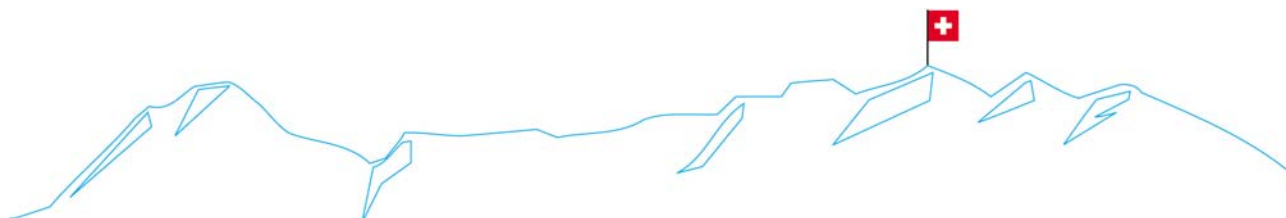




1° Piano



2° Piano





Piano Terra

Contatti:

Arch. Antonio Rodriguez
arodriguez@swissonline.ch

